

CARLO GAVAZZI

Carlo Gavazzi Space SpA

Lanfranco Zucconi
Amministratore Delegato
Carlo Gavazzi Space SpA

Carlo Gavazzi Space
“Entrati nella realtà umbra”



Carlo Gavazzi Space S.p.A.

Carlo Gavazzi Space S.p.A. Overview

Fiscal Year 2004/05:

Turnover: **40 M€**

Employees: **200**

Research: **> 15% Turnover**

In Space Business since **1981**

ISO-9001 Certified

Core Business:

Satellites, Orbital Infrastructures
Scientific Payloads,
Earth Observation



Locations

Milano – Headquarters

Benevento – Research Lab & Telematics

S. Giorgio del Sannio (BN) – Aerospace

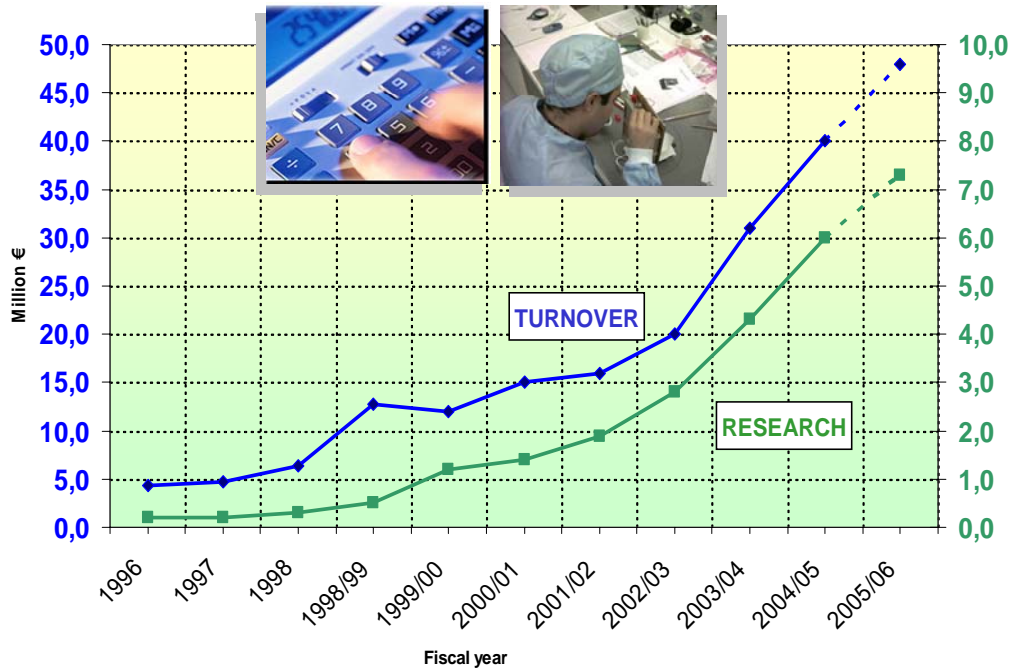
Rivalta Scrivia (AL) – Satellite Integration

Bologna – Enabling Technology. Environmental Monitoring, Earth Observation

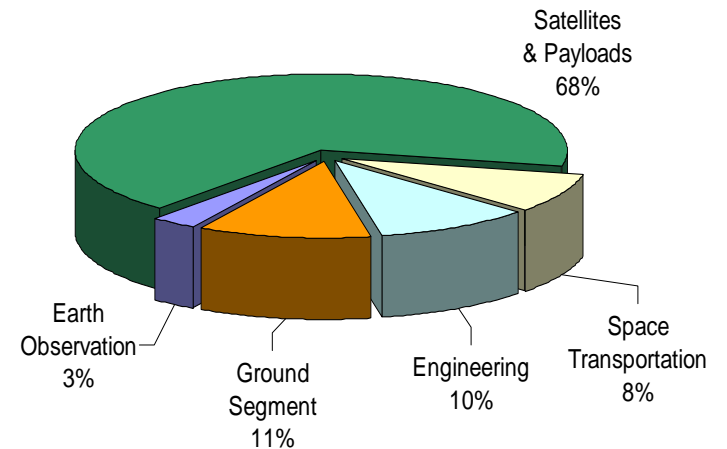


Carlo Gavazzi Space S.p.A.

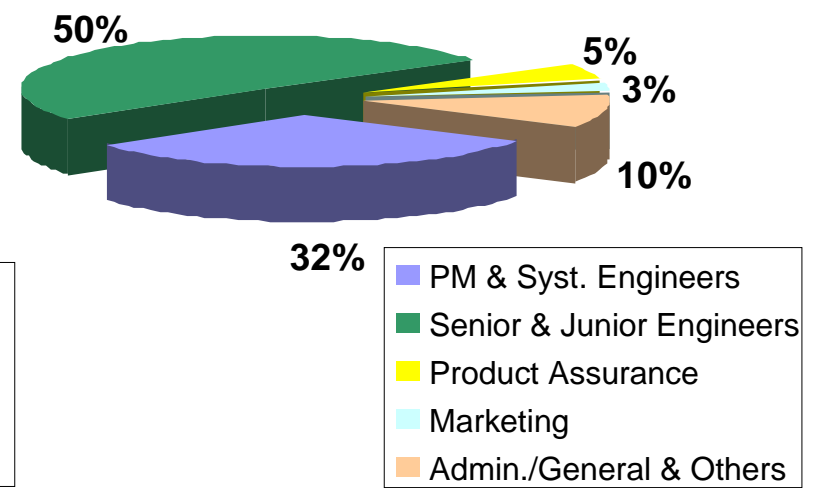
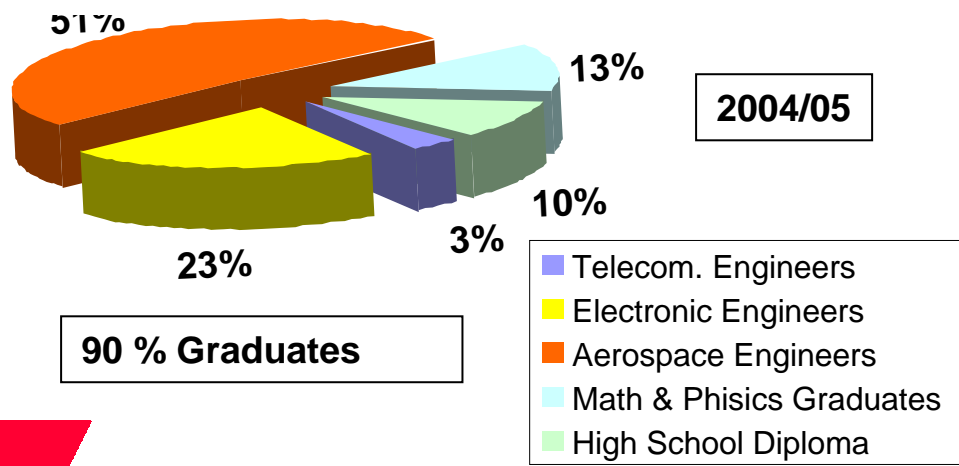
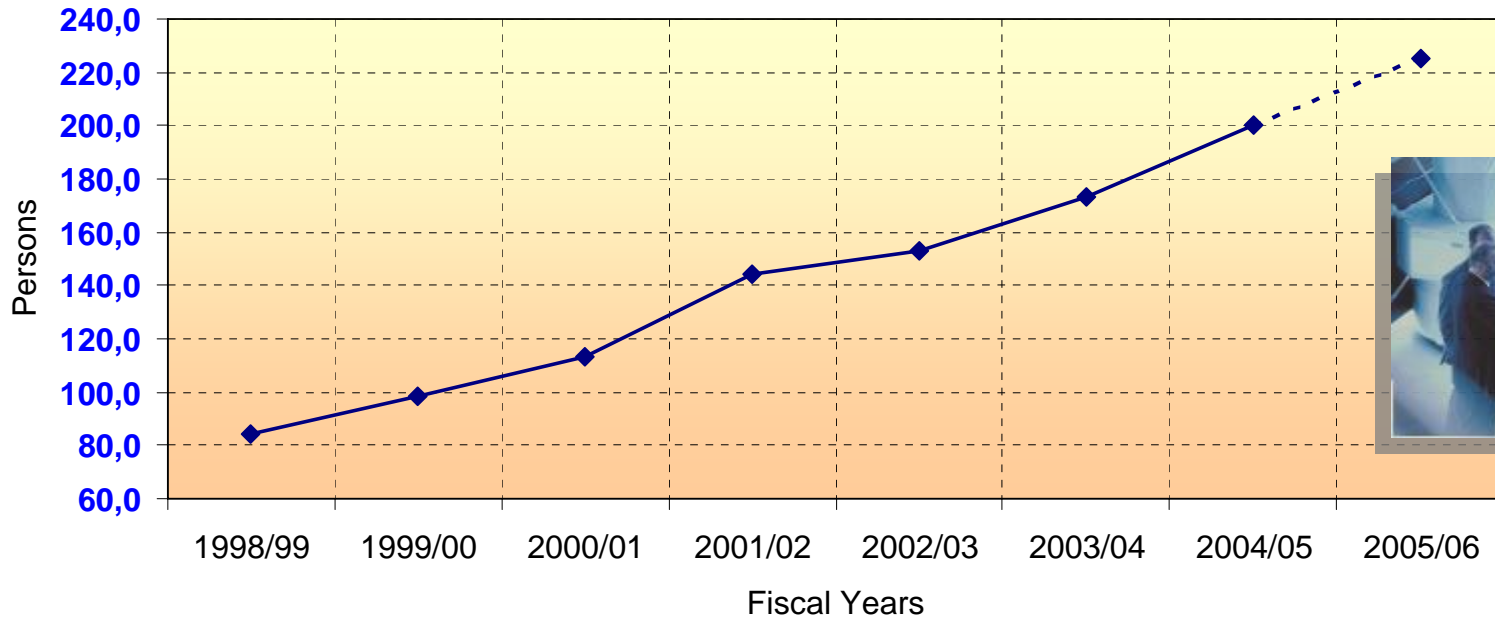
CGS - Financial Facts & Figures



Distribuzione delle attività



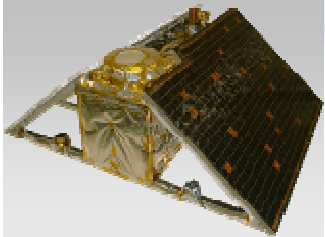
CGS - Staff



Business Mission

PROVIDE THE USER COMMUNITY WITH SOLUTIONS TO LOWER THE COST OF FIRST CLASS SCIENCE AND APPLICATION PROJECTS

BY:



Exploiting the full potential of Small and Medium Size **Satellite** Missions.

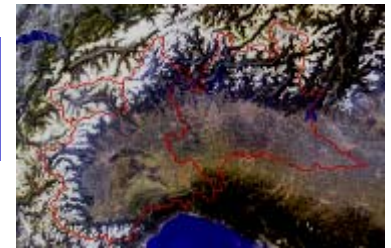
Exploiting new **Orbital** and **Transportation** Systems.



Turning technologies into products for **Scientific** and application projects.



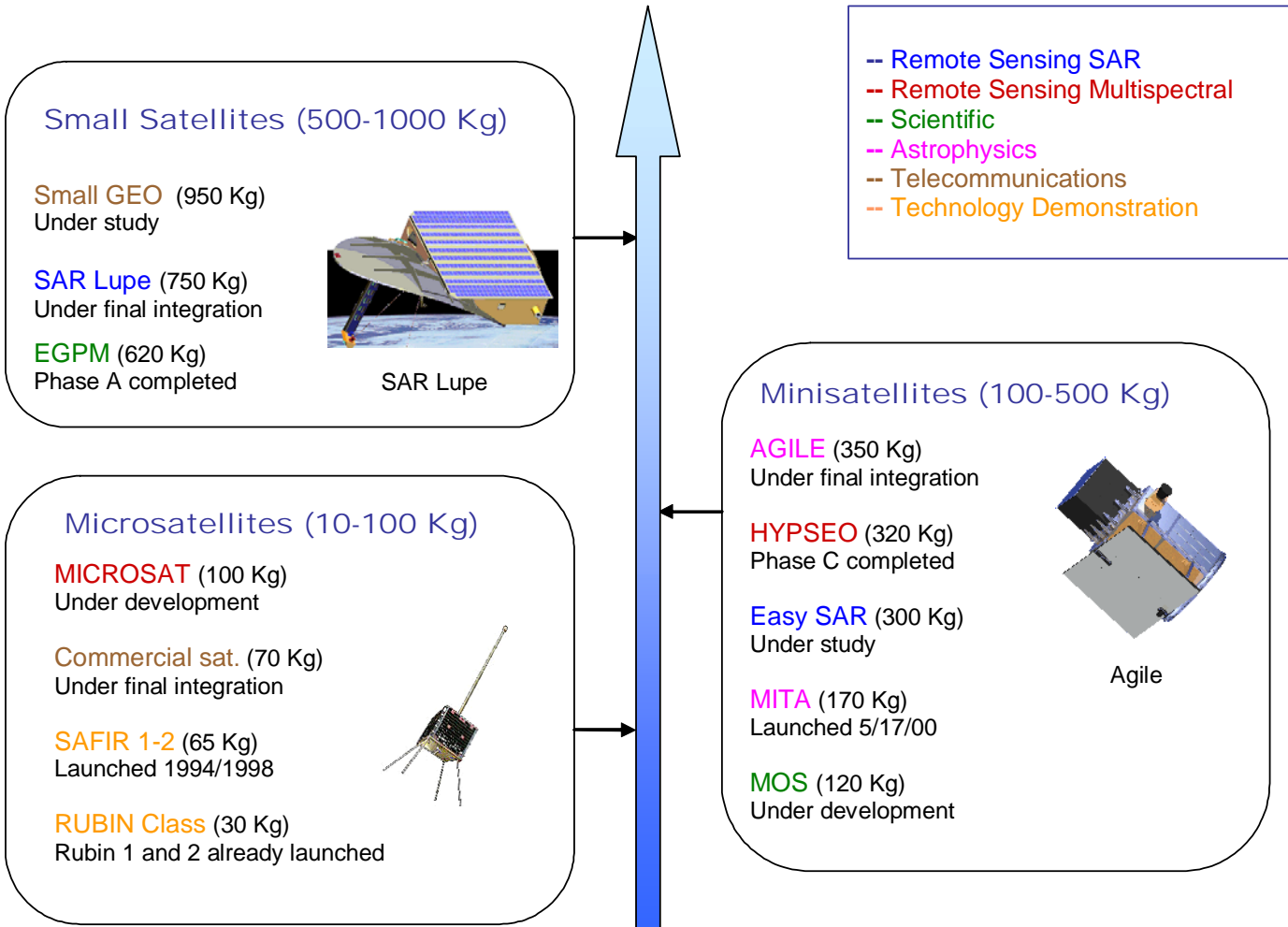
Developing new technologies for **Earth Observation** services.



Realizing reliable systems for **Ground Segment** applications.



Satellite Roadmap



Orbital Infrastructures

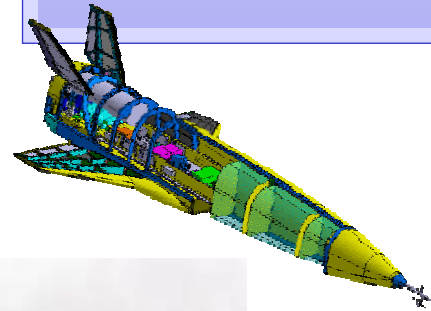
International Space Station: significant expertise on facilities and payloads for internal and external experiments.

Internal ISS experiments

RPDA Remote Power Distribution Assembly, **BIOLAB** Laboratory for biology, **FSL** Fluid Science Lab, **EPM** European Physiology Module, **HCU** Heater Control Unit.

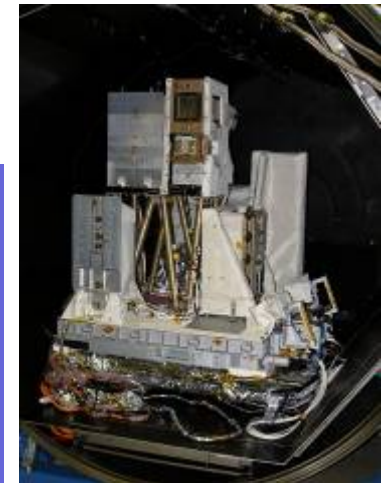


Unmanned Space Vehicles: structures and mechanisms of the Prora USV of CIRA.



External ISS experiments

AMS02 Alpha Magnetic Spectrometer, **EUTEF** European Technology Exposure Facility, **EUROPA** External Use of Robotics for Payloads, **HEXAPOD** Pointing System, **CPD** Coarse Pointing Device, **LOBSTER** Observatory



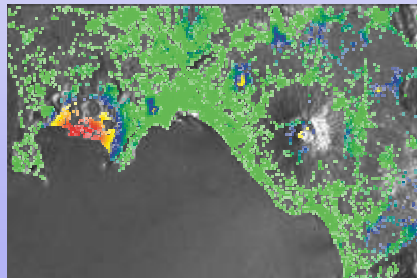
Earth Observation

Earth Observation: Exploitation of remote sensing data for environmental monitoring, natural hazards and security, air quality

Service Provider Role:

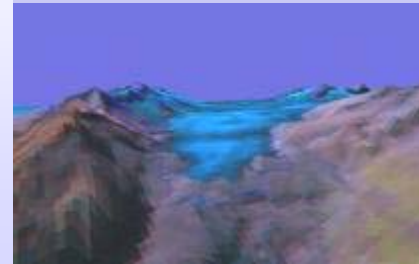
- User requirements analysis
- End-to-End information chain design and development
- Technology transfer: from research to operational systems
- Product generation and validation
- Product promotion and delivery to users
- Education and Training

Monitoring of Environmental Risks in Volcanic Areas.



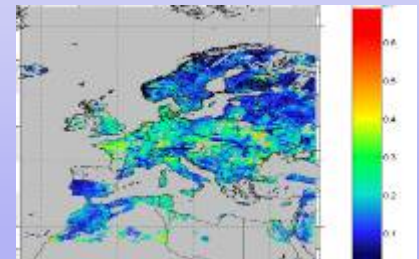
MINERVA
(ESA DUP Project)

Monitoring of Glaciers and Snow Cover mapping in the Alpine regions.



GLASNOWMAP
(ESA DUP Project)

Air Quality monitoring



PROMOTE
(ESA Project)

Other Areas of Expertise

Tropospheric Emissions Monitoring (TEMIS),
Hydropower Plant Management (EO-HYDRO),
Air Quality Control (Quitsat, Promote), Landslide
and forest fires monitoring (Morfeo, Sigrì)

I SERVIZI

Un Servizio Informativo basato sull'Osservazione della Terra consiste :

- **Nell'acquisizione dei dati grezzi da distributori commerciali , istituzionali o direttamente da un sistema di acquisizione.**
- **Nella elaborazione dei dati grezzi , integrazione con osservazioni "in situ", fino alla generazione del prodotto di interesse dell'utente.**
- **Nella distribuzione tempestiva del prodotto finale all'utente**

LE APPLICAZIONI

Ambiente e Territorio : urbanizzazione, parchi, network tecnologici , qualità dell'aria

Disastri Naturali : Incendi, Alluvioni, Frane

Energia Rinnovabile : Idroelettrico, Solare, Eolico

Attività : Agricoltura, Pesca , Miniere

Aiuti Umanitari : Campi Profughi , Missioni umanitarie

Sicurezza : Controllo dei confini , Terrorismo

LE CAPACITA' DI CGS

Segmento Spaziale :

Progetto, sviluppo e fornitura “ chiavi in mano” di piccoli satelliti per l'Osservazione della Terra.

Segmento Terrestre :

Progetto, sviluppo e fornitura chiavi in mano di sistemi di acquisizione, archiviazione e distribuzione di dati EO.

Servizi Informativi : elaborazione e distribuzione di prodotti di vario tipo, a richiesta dell'utente.

L'ESPERIENZA DI CGS

Progetti ESA

MINERVA : monitoraggio della subsidenza nell'area Vesuviana

GLASNOWMAP : monitoraggio ambiente alpino

EO-HYDRO : gestione e monitoraggio impianti idroelettrici

TEMIS : Qualità dell'aria

GMES PROMOTE : Qualità dell'aria

GMES LAND : monitoraggio Natura 2000

Progetti ASI

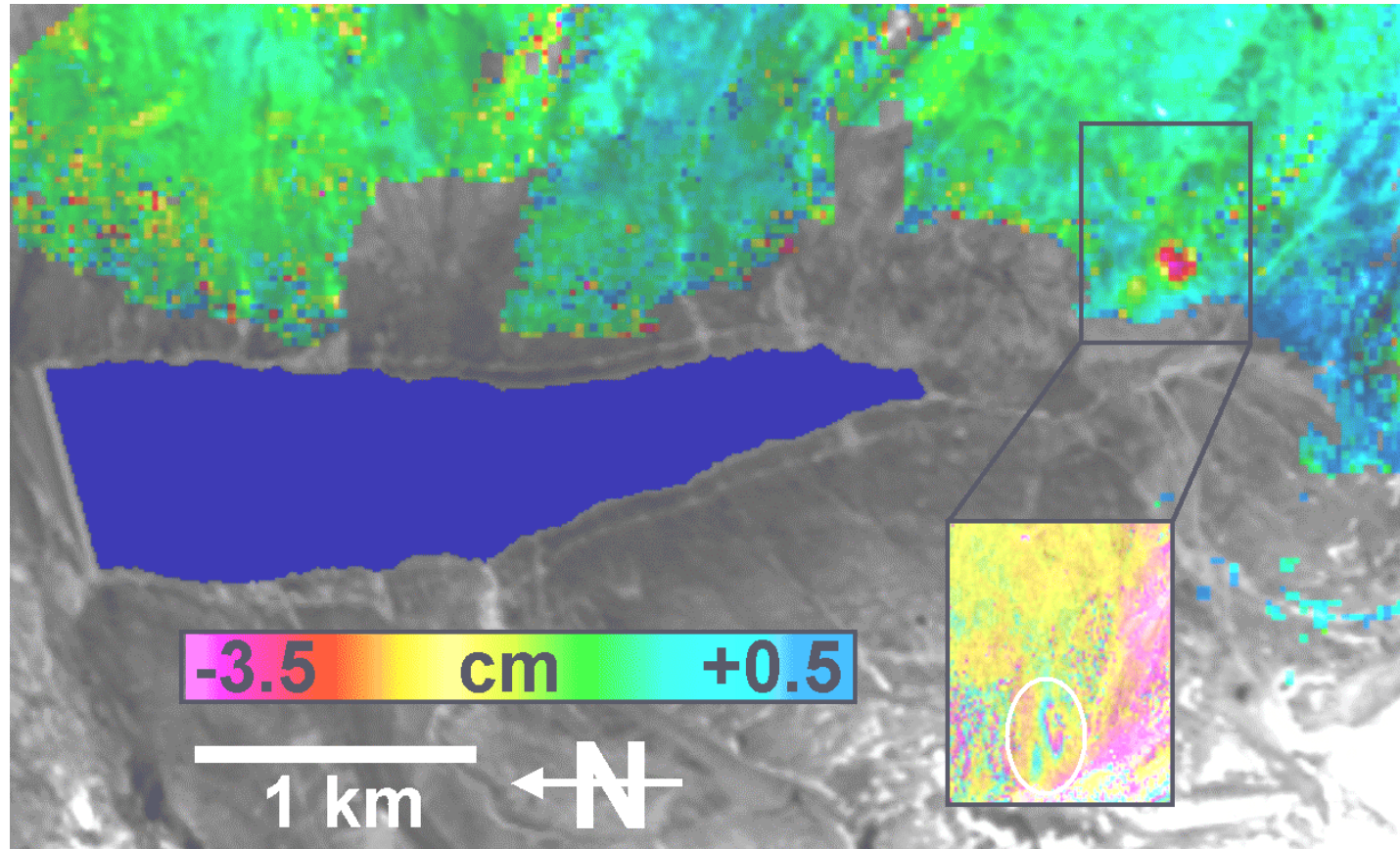
MORFEO : Protezione Civile - Frane

SIGRI : Protezione Civile – Incendi Boschivi

QUITSAT : Qualità dell'aria






NOWCASTING: Protezione Civile - Alluvioni

Mapa Di Deformazione INSAR da coppia di immagini ERS2 , Ambiente Alpino



MONITORAGGIO AREA URBANA



-  Suolo con vegetazione densa
-  Suolo con vegetazione meno densa
-  Suolo non vegetato
-  Tessuto antropizzato
-  Corpi idrici

Ikonos acquisita sulla città di Merano, 13 Luglio 03 ris. 4 m



Carlo Gavazzi Space S.p.A.

Carlo Gavazzi Space SpA

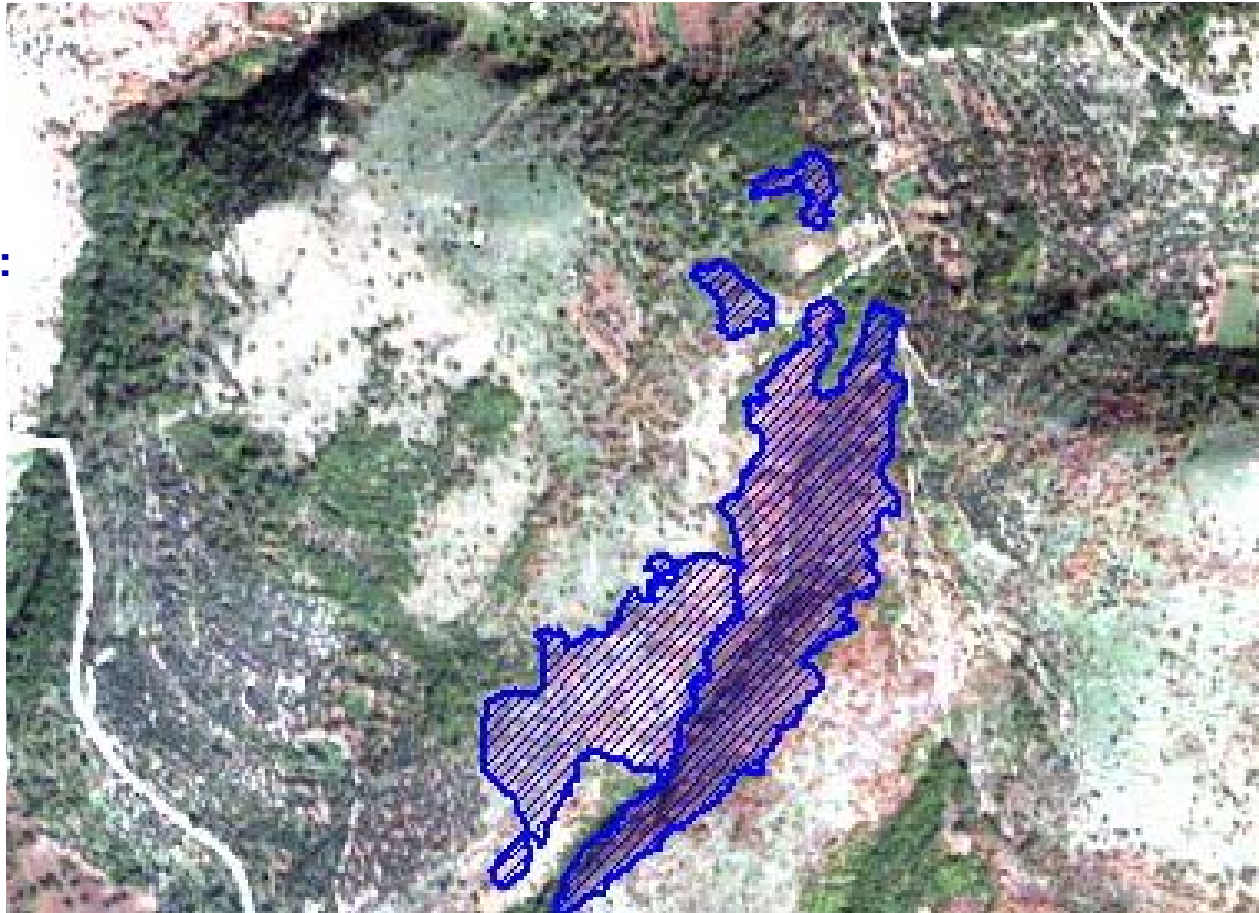
MAPPA AREE PERCORSE DA FUOCO

QuickBird

AREE INCENDIO:

- ✓ 3,22 ha
- ✓ 2,42 ha
- ✓ 0,2 ha
- ✓ 0,1 ha

BENEVENTO



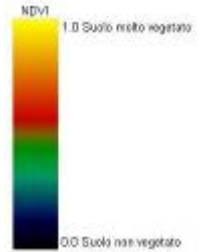
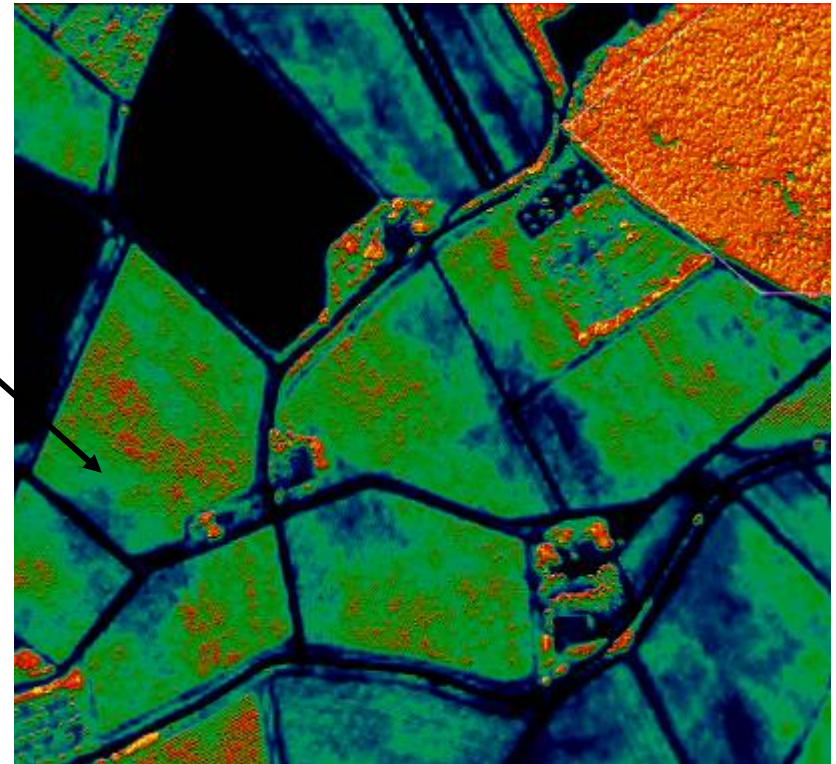
Controllo colture: vigneti

Ikonos 23 Maggio 2003 – Toscana

Vigneti



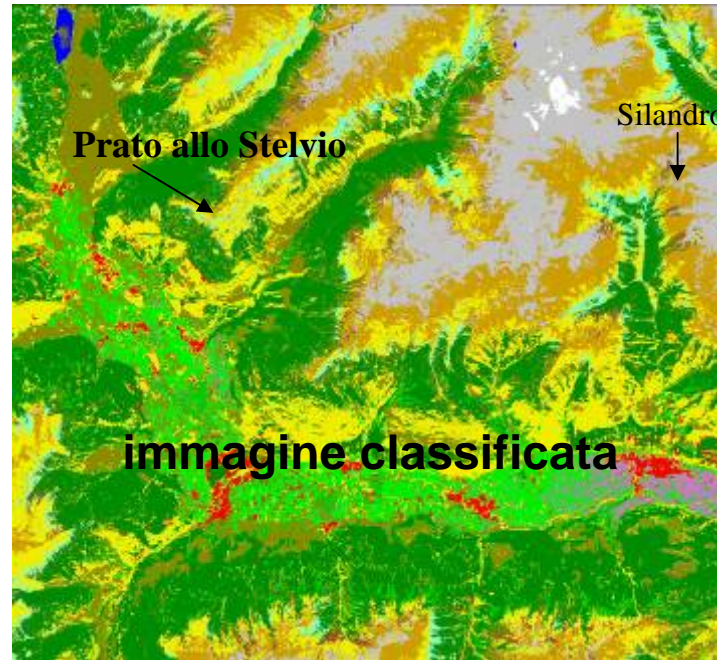
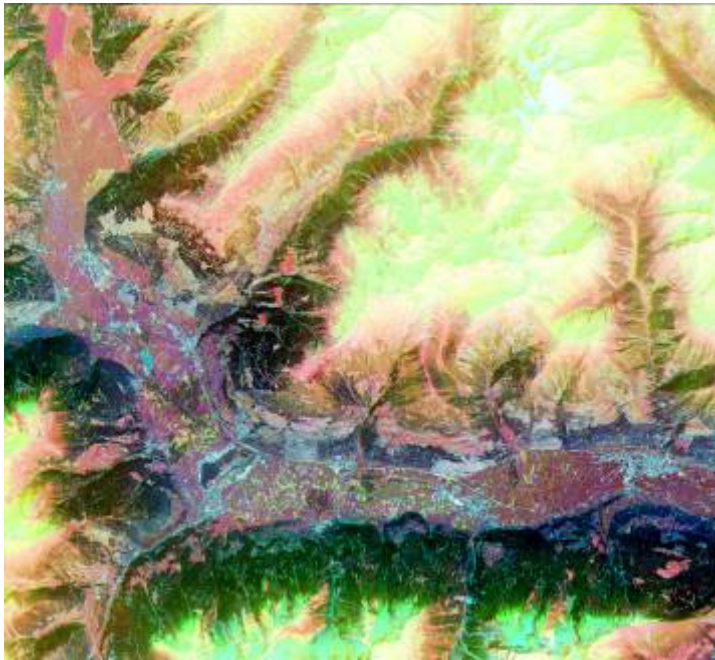
Indice vegetazione



USO DEL SUOLO

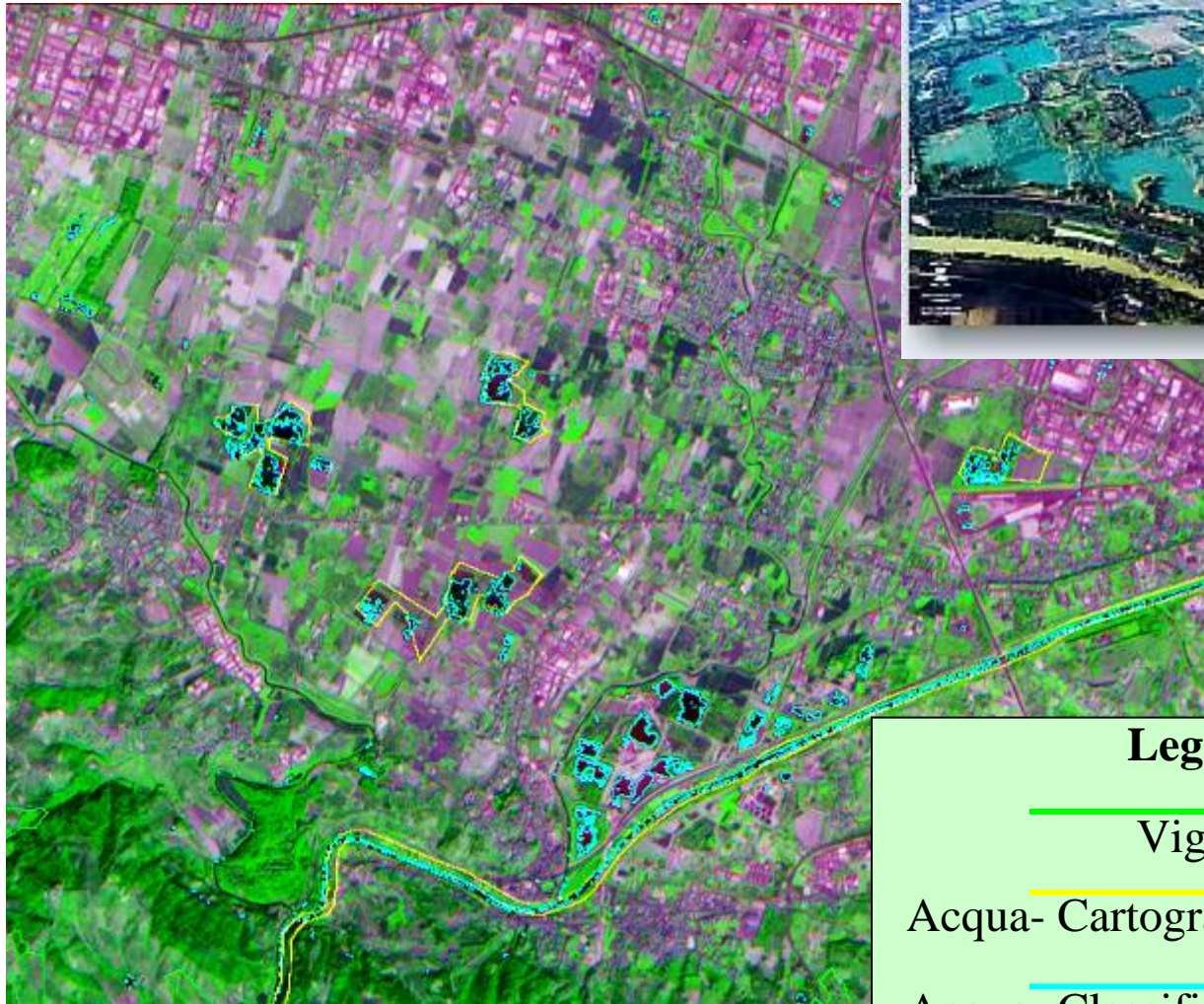
immagine multi-temporale SPOT,

ris. 10 m , febbraio 2003 VAL VENOSTA




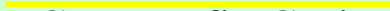
- Aree a pascolo
- Ghiacciaio
- Conifere
- Prati stabili
- Latifoglie
- Suolo nudo
- Coltivato
- Colture permanenti
- Roccia nuda
- Corpi idrici
- Brughiera
- Vegetazione rada
- Tessuto antropizzato


IDROGRAFIA Parco dei Renai – Signa (FI)



Legenda

 Vigneti

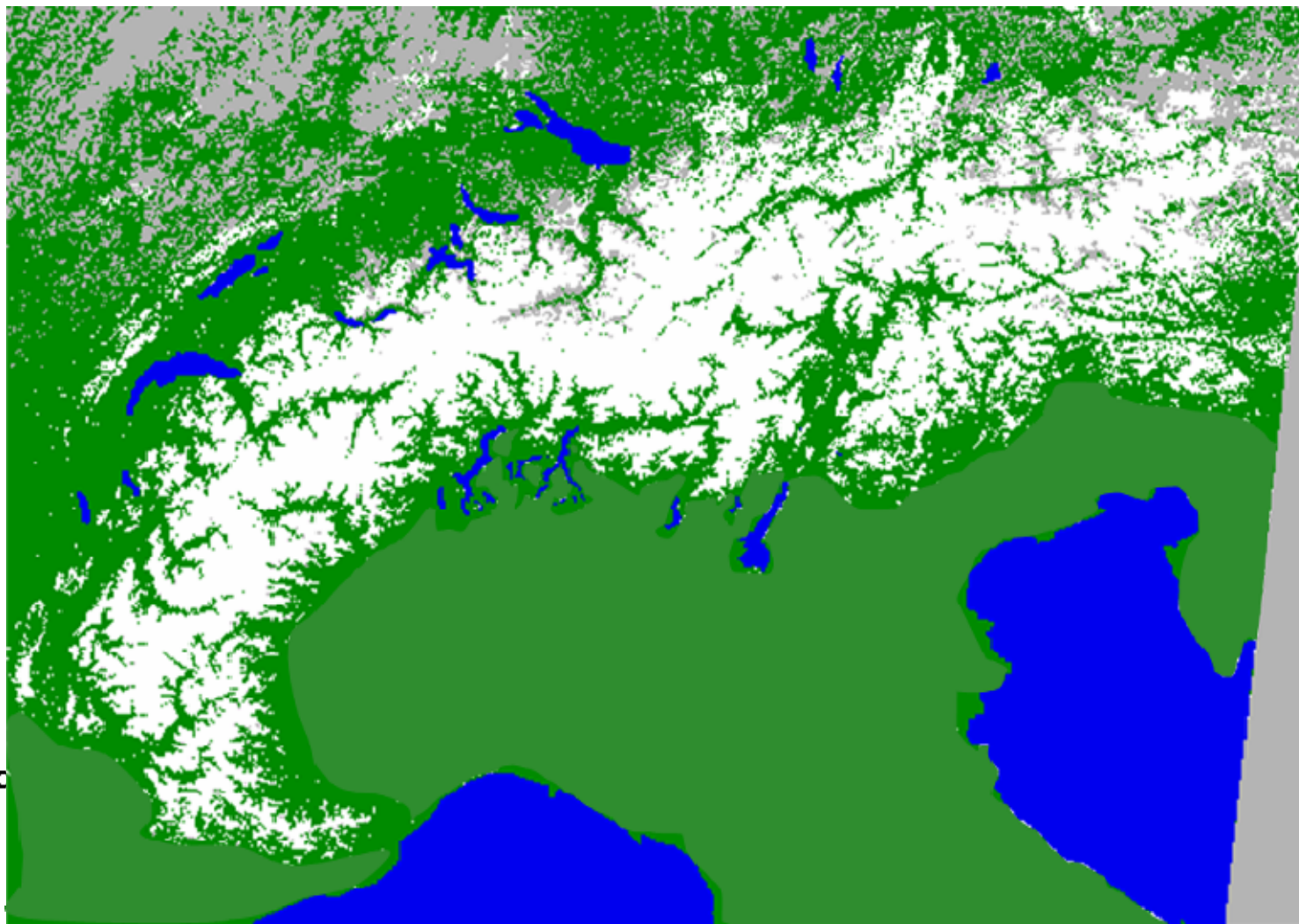
 Acqua- Cartografia Corine 99





 Acqua- Classificato da satellite

Copertura Nevosa Arco Alpino

MODIS
250 m res.

18 APRILE
2006



-  Snow
-  Snow free
-  Clouds/Unclassified
-  Water bodies

CONCLUSIONI

L'Osservazione della Terra da Satellite è uno strumento essenziale per il monitoraggio e della gestione del territorio ai fini delle politiche dello sviluppo sostenibile .

La collaborazione fra industria e istituzioni è fondamentale per guidare e lo sviluppo dei nuovi servizi e delle nuove tecnologie.



Carlo Gavazzi Space S.p.A.