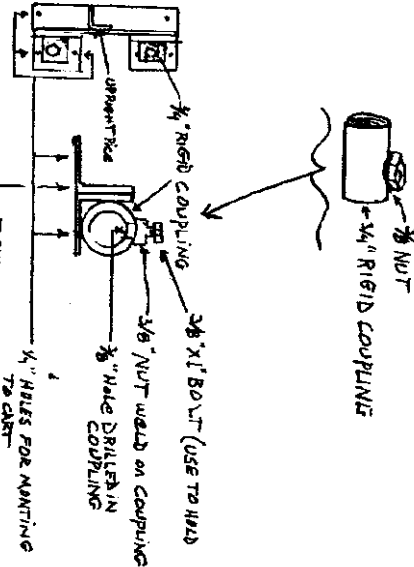


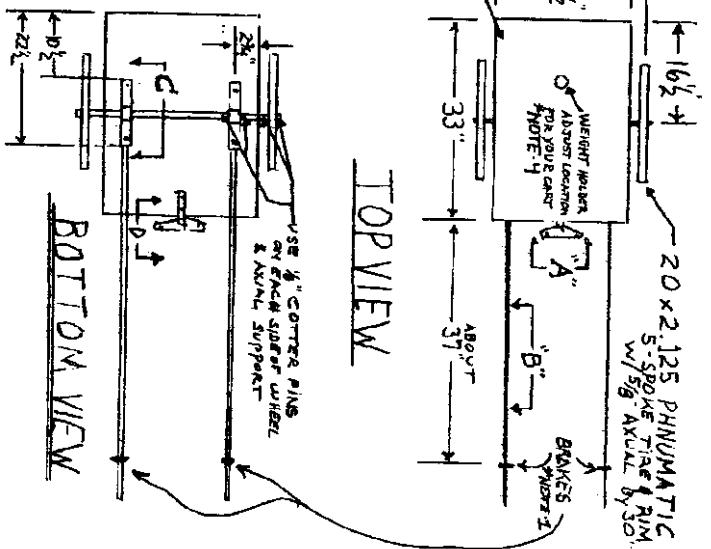
DETAIL "C"

TOP

FRONT

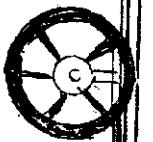


TOP VIEW



BOTTOM VIEW

NOTE-2



SIDE VIEW

NOTES:

1. BRAKES - STAYED WEIGHT CALIERS FROM LOWE DUMMSTILL
2. USE  $1\frac{1}{2}$ " (3/4" PLANKING) RIP IN HALF USE FOR SIDES SET BACK  $\frac{1}{2}$ " ALL AROUND CART (2 1/2" x 3 1/2") USE  $\frac{1}{4}$ " PLYWOOD FOR CART BOTTOM
3. YOU CAN USE  $1\frac{1}{2}$ " WOOD PUT IN EYE BOLTS & USE DOUBLE END SNAP HOOK ON CENTER OF TREE TO CART.
4. USE  $\frac{3}{4}$ " FLOOR FLANGES &  $\frac{1}{4}$ " NIPPLE WITH PIPE CAP TO HOLD WEIGHTS IN PLACE

DATE 11-10-99	BY/AMM	HBI	ENCLOSURE -	PAGE -
PROCEDURE NO.		ENGINEERING SHEET	SHEET 1	OF 1
PROJECT DUMM'S CART	PLANS		CHECKED	DATE 11-15-99
SUBJECT CART			REVISION	DATE 11-10-99