

The Matarawa Halt

Volume 25, Issue 4

April 2006

Meeting dates

Meetings held at Matarawa Hall.

6 April 2006
20 April 2006

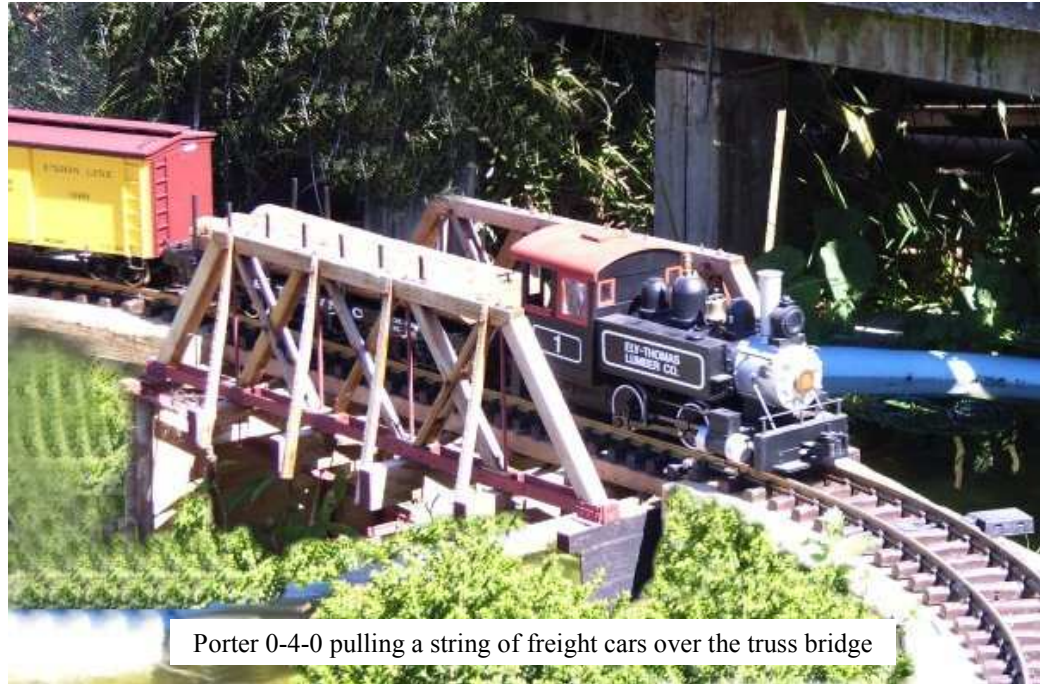
Hall open from 7:30pm.

Committee Meeting
23 April 2006

Inside this issue:

Activities	1
What's on the Workbench	2
Name Change	4
25 Anniversary Celebrations	4
Tokomaru steam Museum Visit	4
Coming Events	6
Supper Roster	6

Activities



Porter 0-4-0 pulling a string of freight cars over the truss bridge

Wairarapa Railway Modellers Inc

Twenty-fifth Anniversary

The Wairarapa Railway Modellers group was formed in 1981. The Club will have a 25th Anniversary Celebration on 5-6 August 2006. Members, both past and present, together with supporters of the group are welcome to attend.

Full details inside.



Deadline for articles, notes, For sale etc for inclusion in the May 2006 issue of The Matarawa Halt is 25 April 2006.

Opinions expressed in The Matarawa Halt are not necessarily those of the Wairarapa Railway Modellers Inc

What's on the workbench?

Grant Morrell: Another busy month on the layout, I was able to cover a variety of tasks that included the painting of 5 Lc wagons, 8 Url log wagons and a recently purchased Ud low relief flat deck. These items are now ready for decaling and weathering. With the purchase of more decoders, 3 more locos (2 x Dg and 1 Dg rebuild) are DCC with 12v lights fitted. On the loco scene my Dc is nearly ready for the paint shop, this loco is a little modern for my era of modelling and will be painted a different colour to what you see today on the daily service.



On the layout, about 70% of the track has been spray painted with rail rust/brown, this was done with my badger mini spray gun, and more styrene has been glued and sculpted. All tunnel sections are now complete, next month should see the tunnel portals painted and weathered. The first layer of scenic detail has been laid in various areas with a very pleasing finish; this follows on from the completion of my main river scene, which took a lot of patience and a fair bit of material to get it right.

Buildings; work has started on the main road over bridge; this is being built using card and parts off the old one from my previous layout. Carterton Station is now in place, well the platform is, the station is removable, chimneys and steps to go then the paint shop, the toilet block, dog boxes and 3 store jigger shed are primed and ready for the final colour and then of course the weathering.

At the dentist on a recent visit I

asked what happens to the expired casting material they use, answer was disposed of – I returned home with a box full of both moulding and casting material, from this and experimenting I have to date been able to make a mould for and cast; concrete stop blocks, tunnel portals and concrete foundation pads for various small buildings. The casting powder is very fine and sets much harder than plaster does. Going to the dentist does pay off.

Athol Hamilton: From 1 member on another island, we can report progress towards a new garage & workshop took a major step forward with the sale & removal of one small garage (thanks Trade Me). We now



Small Garage Sold



Proposed New Garage

await consent to have a 6.6x4.8 erected & one man will feel more "at home" with somewhere to while an hour or 2 away!

We have found some tools amongst the unpacked boxes to start building the Kaitangata



Hot Metal Pour

gunpowder wagon (was it the only one to run on NZR tracks?) & a start has also been made to a 30' clerestory guards van. I have attended the local NZR Modellers (Sunday) group at the invitation of Peter Ross & so at least I am not feeling quite such a "country" member now, & like most clubs there is an interesting diversity of scales & interests.

Peter Murray: I have done more track work and almost got all of the buildings in position with tracks semi-laid to suit.

Due to a wee lack of space for such a large yard, the positions of buildings have been changed to suit and hopefully all will run well and I can start on scenery and play time.

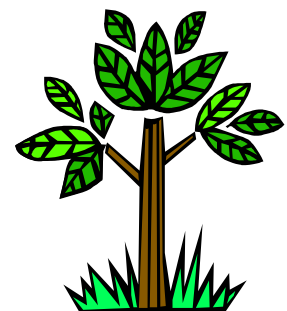
Wayne Haste: Attached is photo of ex Lake George and Boulder now running as private company cars for LGB.



Ian Galbraith: Garden railroading is hard work. Just as well "she who must be obeyed" does the hard graft. A path has been laid alongside the garden.



Laying the path



Club Name Change

With the increased interest, and purchases by members, of Garden Railway models, the committee, following requests and deliberations has decided that the club name should be changed.

At the AGM, in July, the committee will formally move that the club name be changed to:

Matarawa Garden Railway Society Inc.

A new constitution reflecting the name change will also be presented

Twenty-fifth Anniversary Celebrations.

The Wairarapa Railway Modellers Inc 25th Celebrations will take place on 5-6 August 2006. All past and present members, supporters and families are welcome to attend.

Programme

Saturday 5 August 2006

10.00am at Clubrooms for registration, morning tea and a natter with running on the club's layouts.

12 noon Lunch at clubrooms

1.00pm –5.00pm Layout Tour

6.30pm for **7.00pm** Dinner at Masterton Golf Club, Lansdowne, with after Dinner Speaker (Bar facilities will be available at the Golf Club on a user pays basis)

Sunday 6 August 2006

10.00am at clubrooms for morning tea and farewells

Registration cost \$35.00 (Includes Lunch & Dinner on Saturday)

Visit to Tokomaru Steam Museum

On Sunday 4 June 2006 the club will be running a bus through to Tokomaru to visit the Steam Museum and then in to Palmerston North for Ten Pin Bowling and an evening meal.

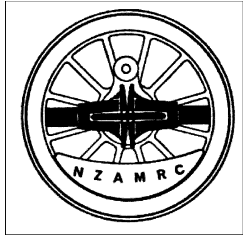
This outing is open to all club members and families. If we fill the 45 seat bus the cost per person will be approximately \$11.50. (To date we have 32 confirmed bookings [\$15.50 ea])

Entry to Tokomaru Steam Museum is \$12 per Adult and \$6 per child.

Ten Pin Bowling costs still to be obtained.

A nice fish meal is available in Palmerston North for \$5.00

The bus will leave from Transit, Queen Street, Masterton at 10.00am.



NEW ZEALAND ASSOCIATION
OF MODEL RAILWAY CLUBS INC

CONVENTION 2006

**Manfeild Park, Feilding
Easter Weekend, 14-17 April**

Like a famous bank once said ... *it's all coming together nicely*

With a fine modern venue just a few minutes from Palmerston North in the Feilding and District Steam Rail Society's home town, this is something not to be missed.

Railway modellers from all over the country getting together, putting faces to names, catching up with old friends; the human side of modelling.

Get out of the doldrums, give yourself a boost –

Hear from the experts on a range of topics including:

- Layout design and landscape modelling (with English guest Barry Norman)
- Laying track
- Loksound on-board steam and diesel sound
- Making flaxes, cabbage trees, long grass, beech trees and more
- Layout topography
- Modelling NZR in HO scale (HOn3.5)
- Use of ball bearings in rail models
- Kit construction, and more

See some of the country's best railway models

- Models on display (remember to bring some of your own)
- NZAMRC model competition (get entry forms and info from the web site below)

See layouts

- At least five high profile layouts on site : Auckland 9 Mill : Hamilton Model Railroaders (1:64 NZR) : European MRC (HO) : Istein (Marklin) : Horton on Ribblesdale (4mm UK)
- Tours featuring 16 local layouts (British/USA/NZR in S/OO/HO/N scales)

Retail therapy

- Big range of traders
- Bring/buy/sell/swap (turn your old stock into dollar\$ to spend)

Other activities

- NZAMRC and Guild AGMs
- Special interest groups (host your own SIG meeting)

Social highlights

- Non-modeller programme
- Convention dinner

See some of the best restored real trains in the country at Feilding Steam

Visit the Toll (United) maintenance depot (Hi Viz jacket area, no sandals)

Other local attractions include car, traction engine and steam museums

Don't miss out, there's still time to register use the registration form on the back, or for further information write now to the convention secretary, 29 Apollo Parade, Palmerston North, or phone 06 356 7750 or 027458 2038, or visit the NZAMRC web site: <http://www.geocities.com/nzamrc/2006.htm>

Committee

President	<i>Jim McIntyre</i>	<i>06 379 9141</i>
Imm Past Pres	<i>Phil Dittmer</i>	<i>021 1472731</i>
Secretary	<i>Ian C Galbraith</i>	<i>06 377 3603</i>
Treasurer	<i>Peter Milburn</i>	<i>06 370 3983</i>
Committee	<i>Clinton Buller</i>	<i>06 379 6969</i>
	<i>Brendon Clarke</i>	<i>06 377 2330</i>
	<i>Peter Murray</i>	<i>06 378 0186</i>
<i>Newsletter Assistant</i>		<i>Peter Murray</i>

Supper Roster

6 April 2006	John Needham	Carole Needham
20 April 2006	Paul Chalmers	Ian Galbraith

If you are unable to provide supper on your rostered night, either swap with another member or contact Ian Galbraith

There is no telephone at the clubrooms, but a cell phone, 021 2646945 is usually on hand.

Coming Events

8-9 April 2006	Wairarapa Toy Fair 2006 Masterton Town Hall (Information available at clubrooms)	Masterton
14-17 April 2006	NZAMRC Convention Manfeild Centre Registration Forms are available at the Clubrooms	Feilding
20-21 May 2006	Hasting MRC 50th Anniversary Celebrations	Havelock North
3-5 June 2006	Tauranga Model Expo	Bethlehem College Events Centre
3-5 June 2006	Model X Show West Wave Recreation Centre	Henderson
8-9 July 2006	Hobby Expo 2006	Taupo
15-16 July 2006	Palmerston North RAIL X	Palmerston North
5-6 August 2006	WRM 25 Anniversary	Carterton
30 Sept-1 Oct 2006	Wellington Rail-Ex	LH Town Hall & Horticultural Hall

Wairarapa Railway Modellers Inc

c/- Ian C Galbraith
Culcreuch
F/n 41 Skeets Rd,
RD8
MASTERTON
peninsok@xtra.co.nz

Phone: +64 6 377 3603

We're on the net
www.Geocities.Com/wairarapa.geo/

For Sale

Five foot twin fluorescent light fittings. (No Tubes) \$25.00 each
Contact Peter Milburn Ph: 370 3983



Russell Postlewaight found these at Mainline Steam