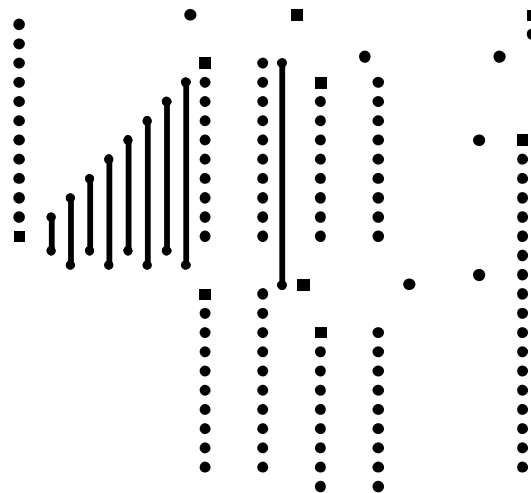
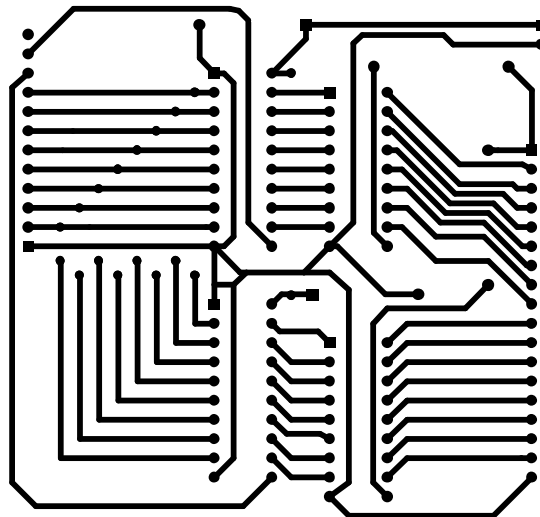


Title LPT-16-O		
Size A4	Number Parallel port card to control 16 current devices	Revision 1.1
Date: 17/01/2006	Sheet of Fishzblu	Drawn By: Text
File: C:\Program Files\...\lpt16o.SCHDOC		



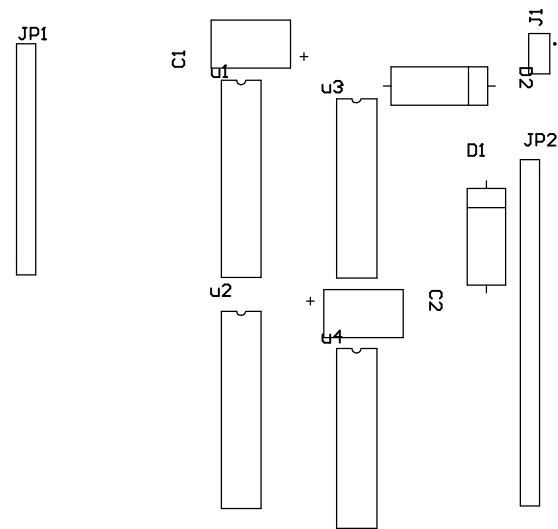
Top Layer - lpt-16-o

Top tracks can be performed using wires



Bottom Layer - lpt-16-o

jp1 - Header12 connector
jp2 - Header18 connector
j1 - two pin connector
U1,U2 - 74LS573
U3,U4 - ULN2801A
C1,C2 - 0.1uF
D1,D2 - 15V or 30V Zener Diode
(depending on external voltage supplied
to controlled devices)



Component placing - lpt-16-o