

Grid is compatible with GPS Receiver
(Set on degrees , minutes, decimel minutes, WGS 8

Major horizontal gridlines are minutes of

Major vertical gridlines are minutes of 1

Minor gridlines are tenths of minutes of

GPS Waypoints can be approximated from map

Numbers on Contour Lines are Elevation

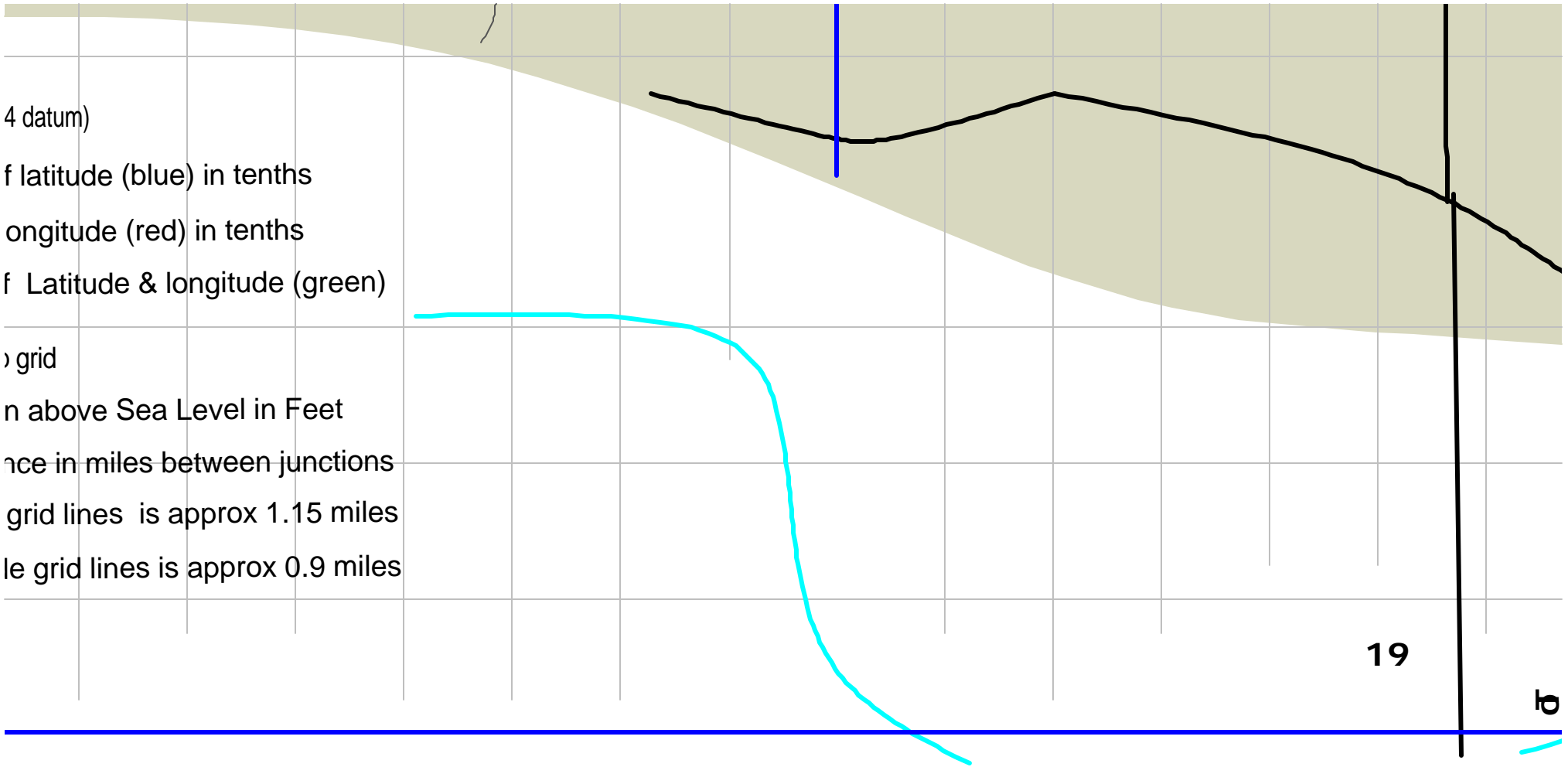
Underlined Numbers on Trails are distar

Actual distance between major latitude

Actual distance between major longitud

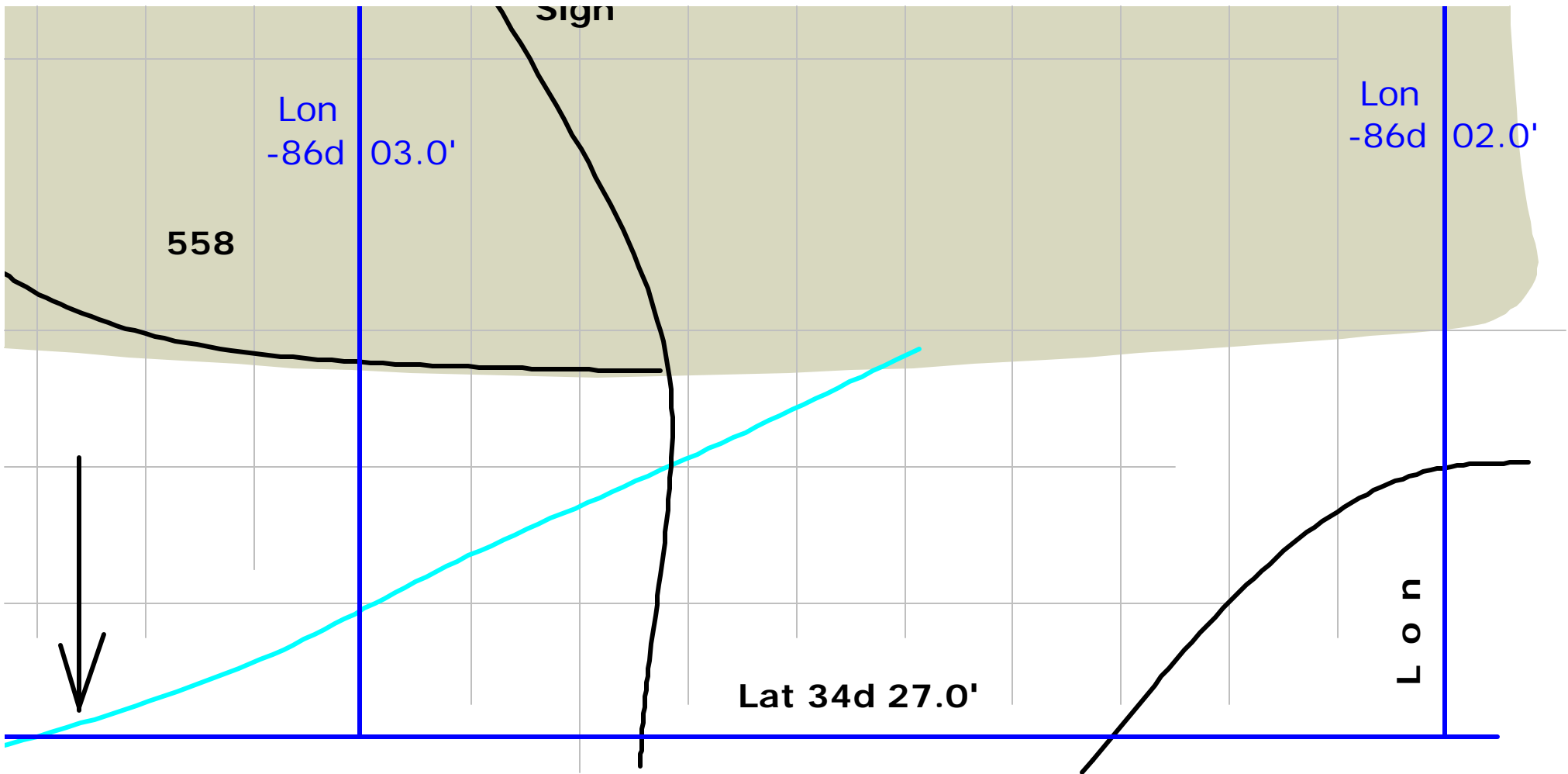
Lat 34d 27.0'

4 datum)
f latitude (blue) in tenths
ongitude (red) in tenths
f Latitude & longitude (green)
o grid
n above Sea Level in Feet
nce in miles between junctions
grid lines is approx 1.15 miles
le grid lines is approx 0.9 miles



19

σ



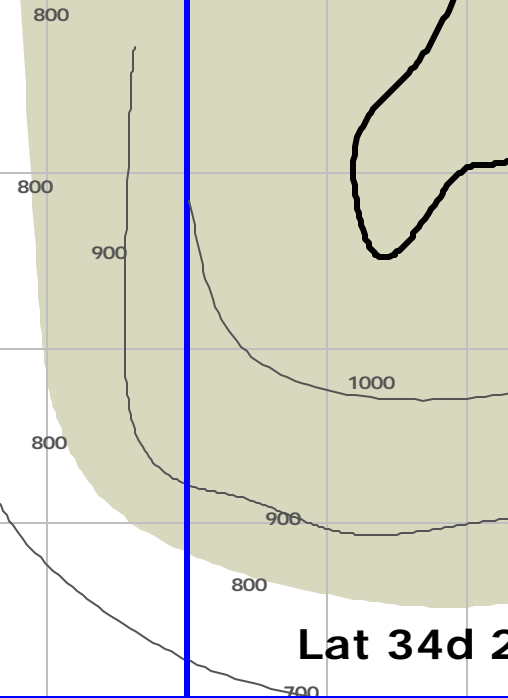
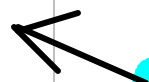
yblitz5@briartech.cpm

yblitz@briartech.com

(Norm Walker)

2/16/02

To Guntersville
Lake



Lat 34d 2'

Lat 34d 28.0'

Morgan Cove

PARKING

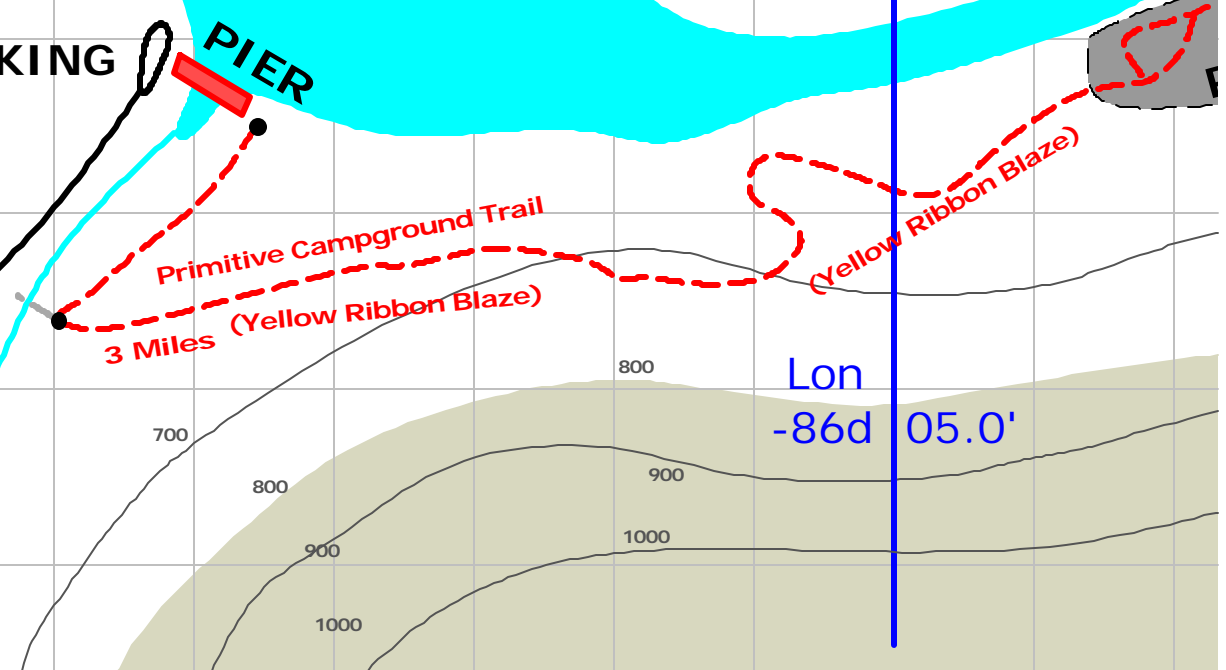
PIER

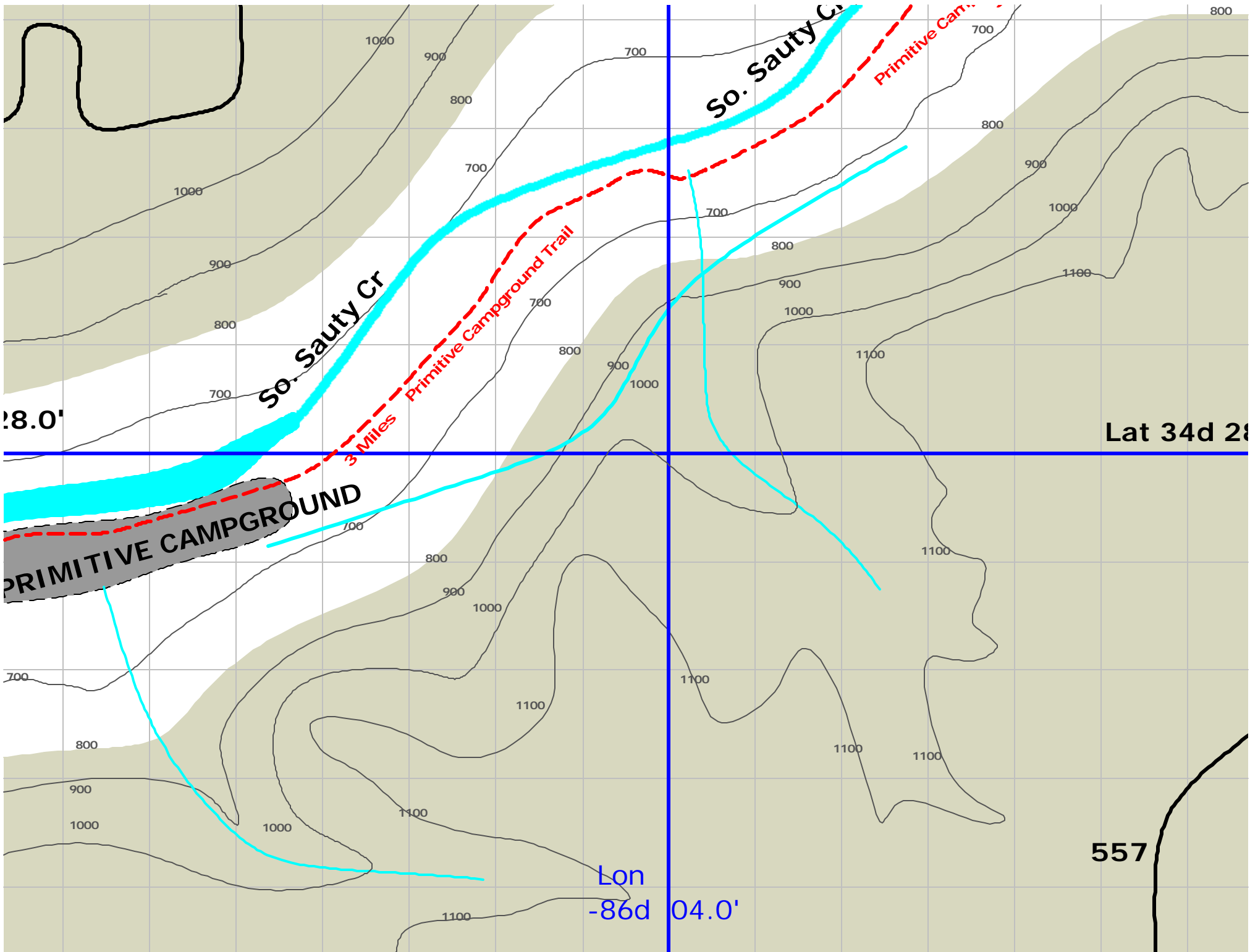
Primitive Campground Trail
3 Miles (Yellow Ribbon Blaze)

(Yellow Ribbon Blaze)

Lon -86d 06.0'

Lon -86d 05.0'





So. Sauty Cr

So. Sauty Cr.

Primitive Camp...

Primitive Campground Trail

3 Miles

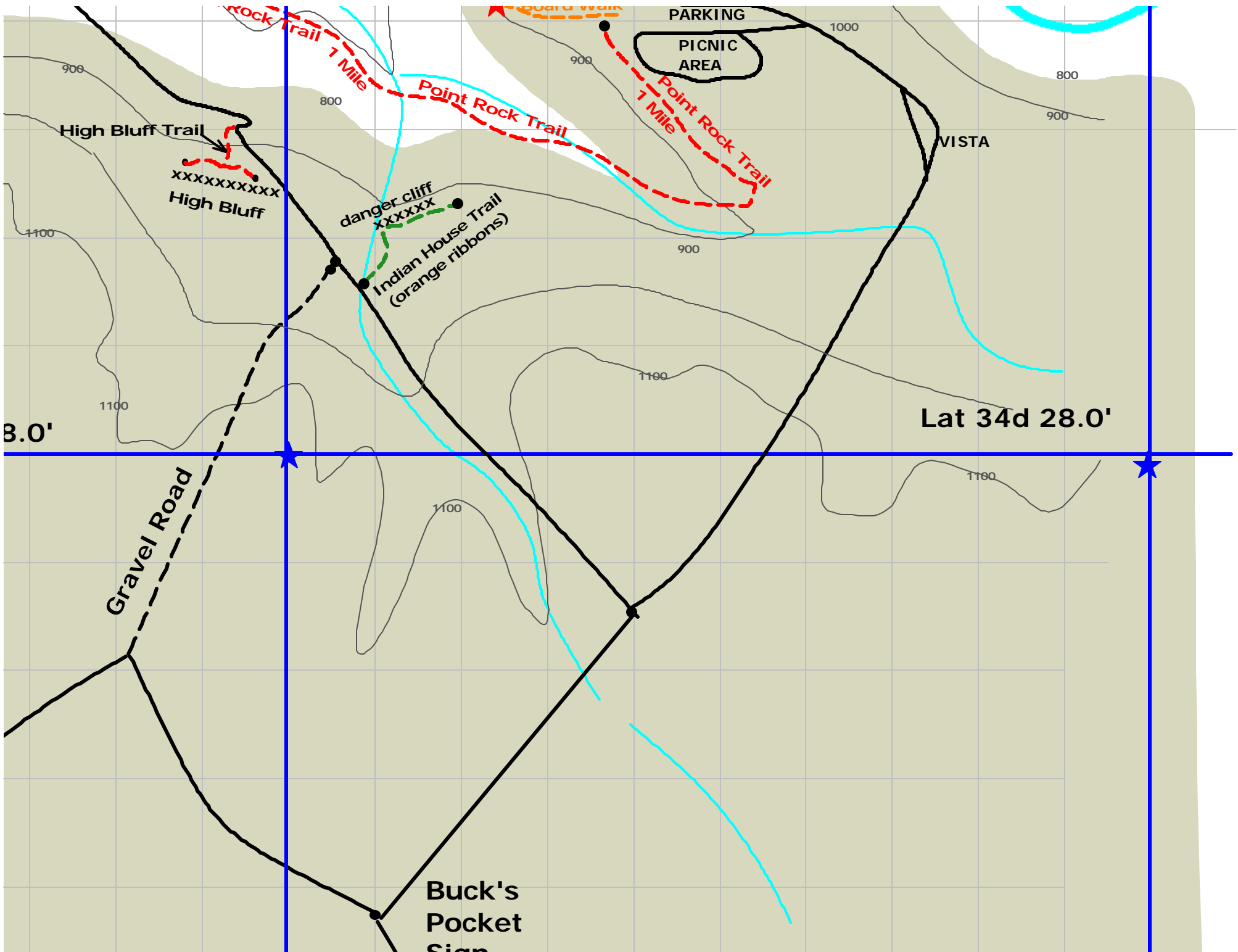
PRIMITIVE CAMPGROUND

Lat 34d 28

Lon -86d 04.0'

8.0'

557



PARKING

PICNIC AREA

VISTA

Lat 34d 28.0'

8.0'

High Bluff Trail

High Bluff
xxxxxxx

Point Rock Trail
1 Mile

Point Rock Trail
1 Mile

danger cliff
xxxxxxx

Indian House Trail
(orange ribbons)

Gravel Road

Buck's
Pocket
Sign

Lat 34d 29.0'

Lat 34d 29.0'

(preliminary)

TRAIL MAP
BUCK'S POCKET
STATE PARK

Lon
-86d 06.0'

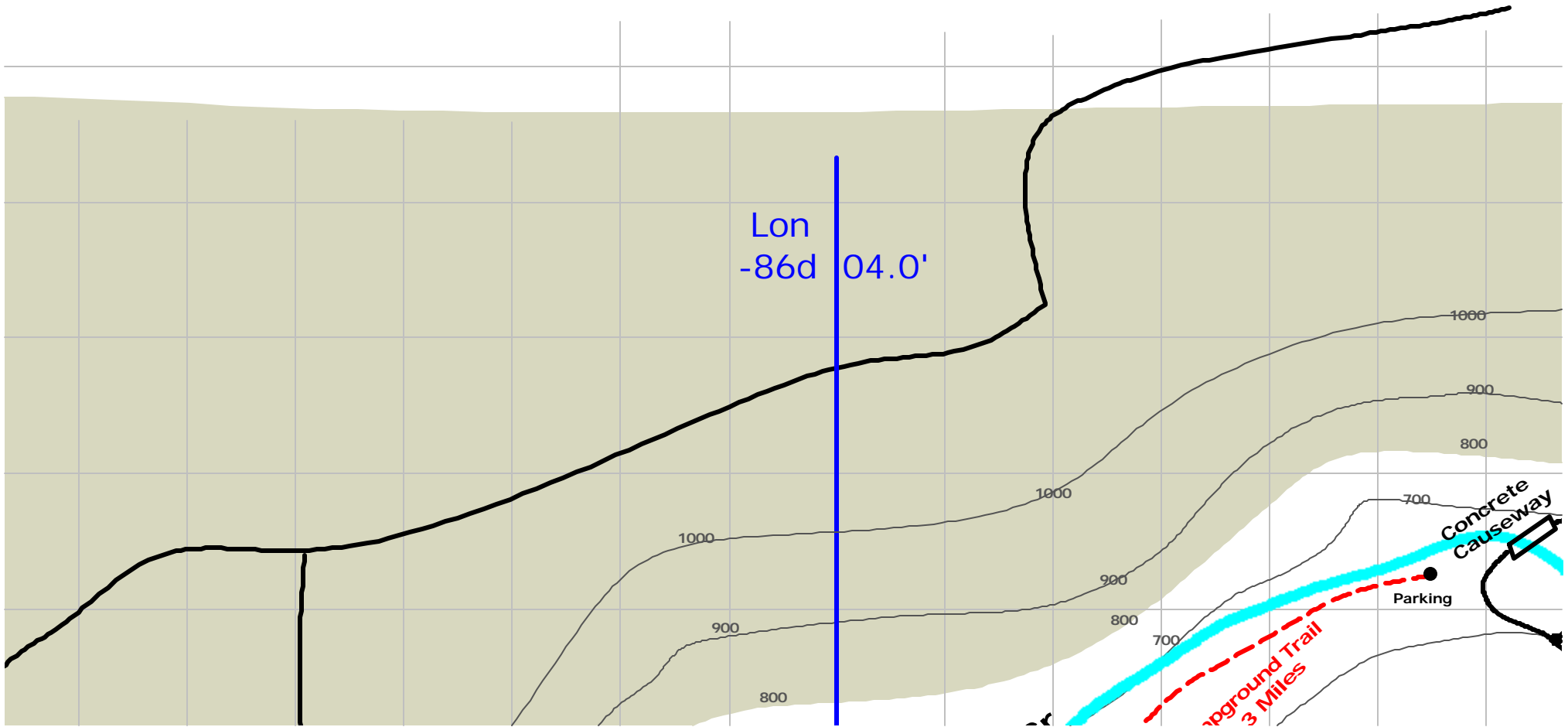
Lon
-86d 05.0'

900

0'

Lat 34d 29.0'

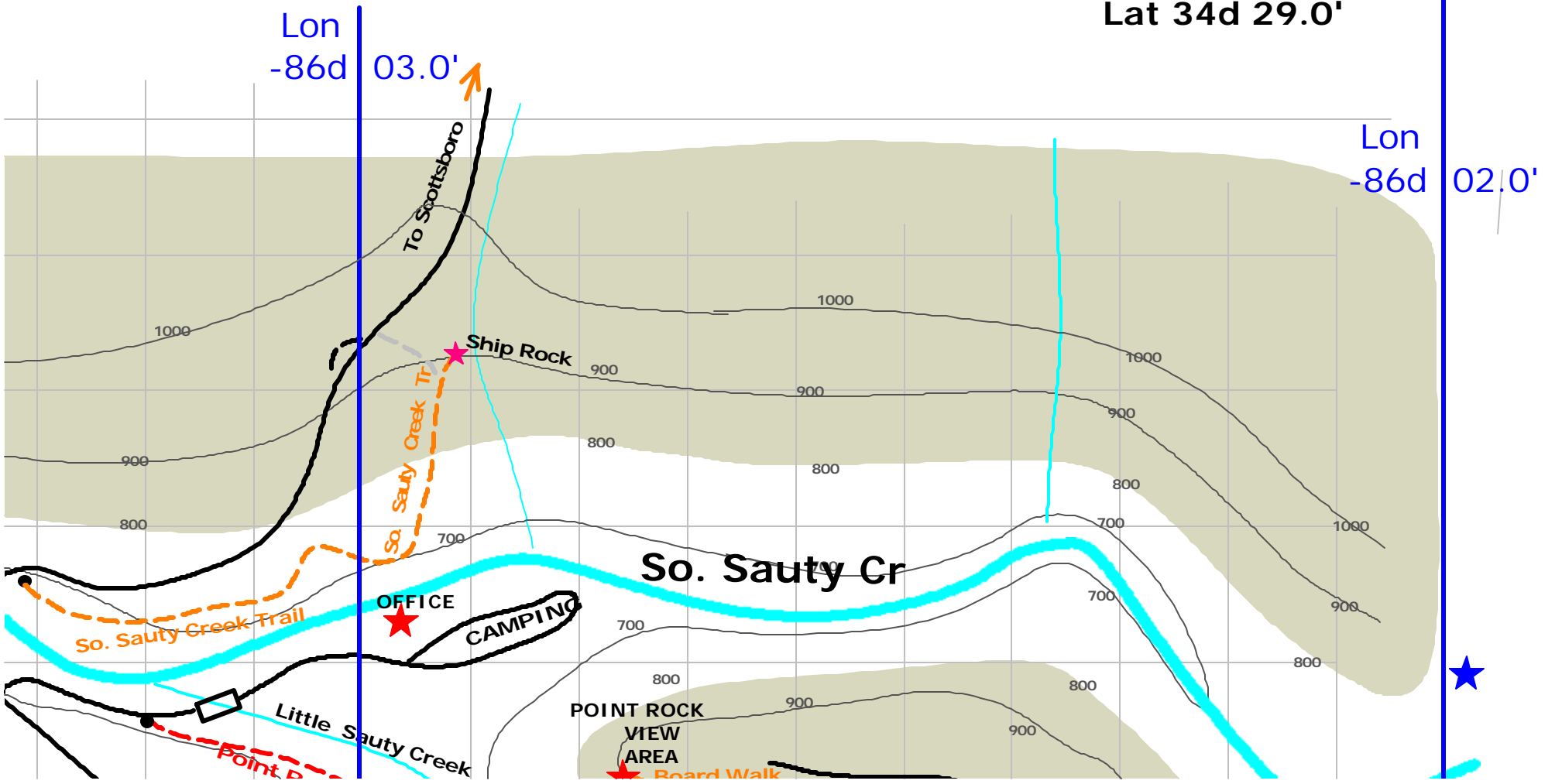
Lon
-86d 04.0'



Lon
-86d 03.0'

Lat 34d 29.0'

Lon
-86d 02.0'



To Scottsboro

Ship Rock

OFFICE

CAMPING

So. Sauty Cr

POINT ROCK
VIEW
AREA

Board Walk

So. Sauty Creek Trail

Little Sauty Creek
Point D