



Men's Contour Sw (front)

cut 2 from fabric
cut 2 from lining

← greatest stretch of fabric



- S** 28-30 wais
- M** 31-33 wais
- L** 34-36 wais





s Contour Swim

(front)

cut 2 from fabric
cut 2 from lining

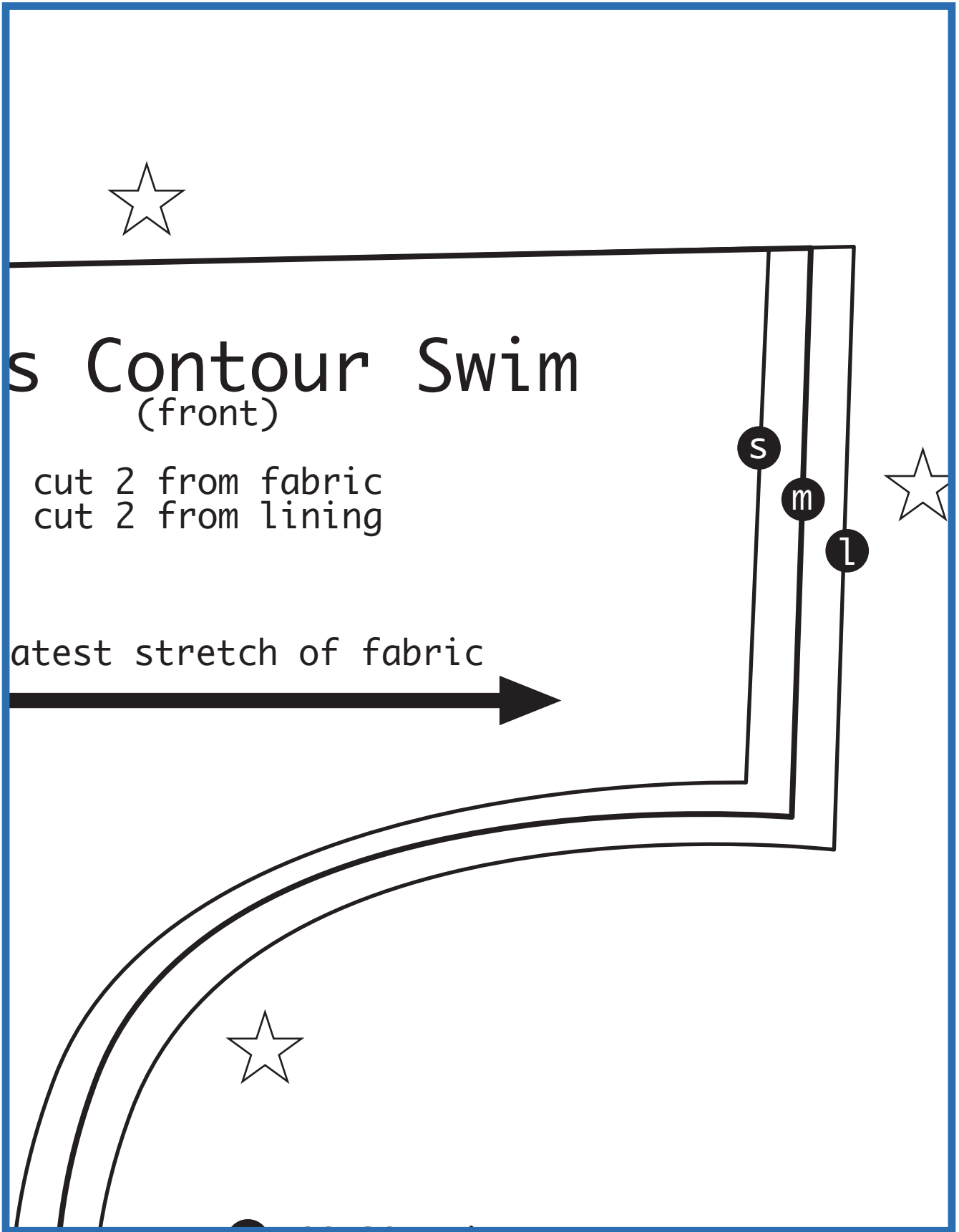
stretch of fabric



S

m

L



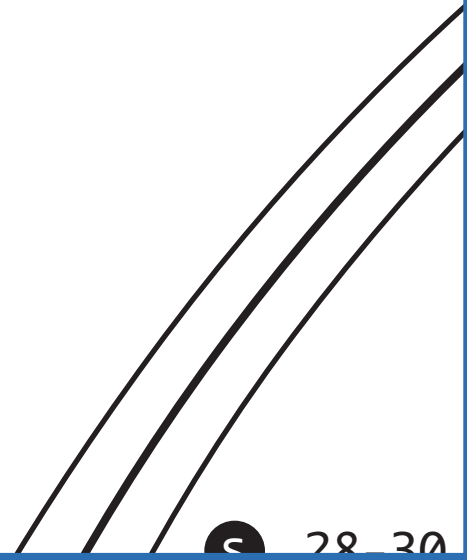


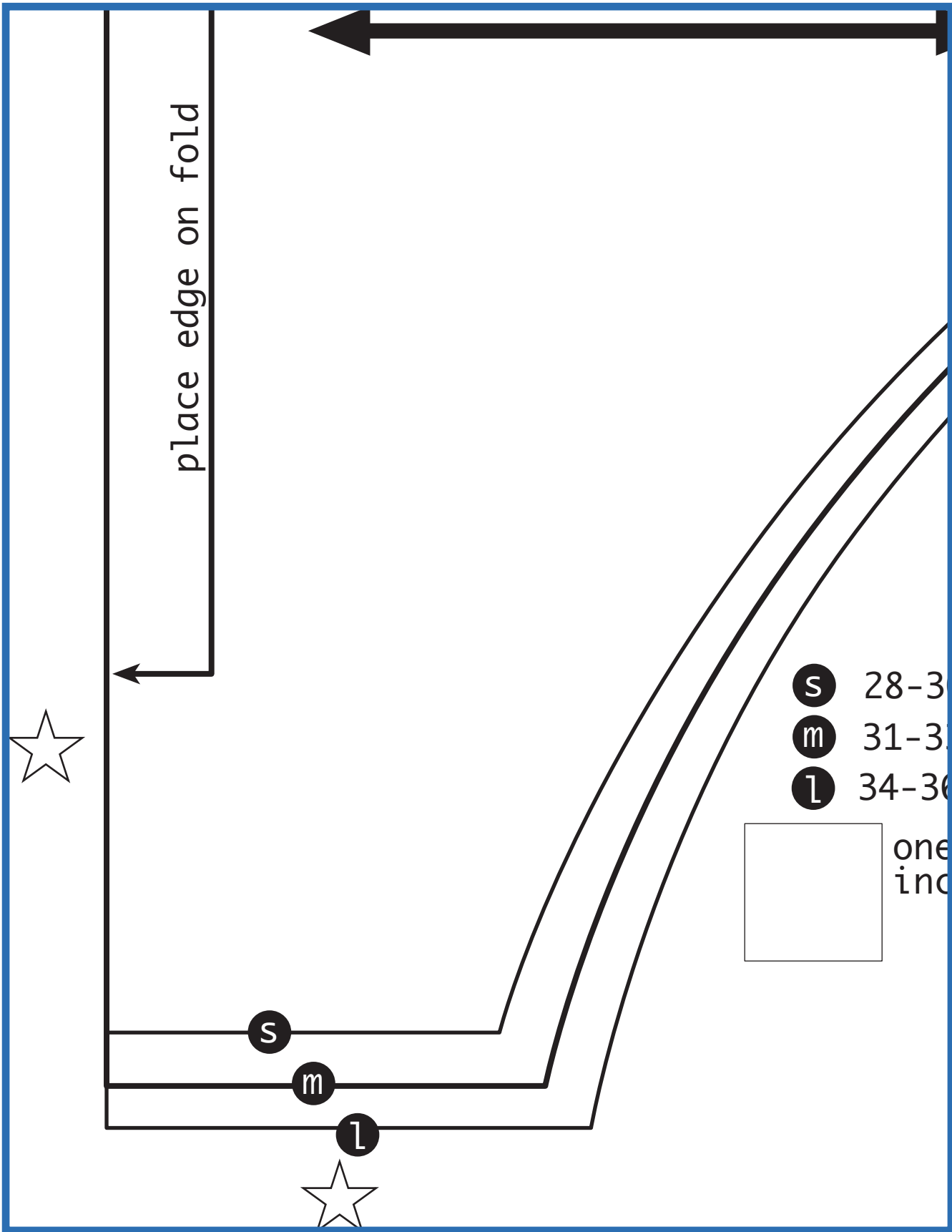
Men's Contour Swi (back)

cut 1 from fabric on fold

greatest stretch of fabric

place edge on fold







Contour Swim

(back)

1 from fabric on fold

steepest stretch of fabric



S

M

L



S 28-30 waist