

Men's S
B

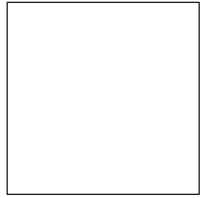
cut 1 fr

greater

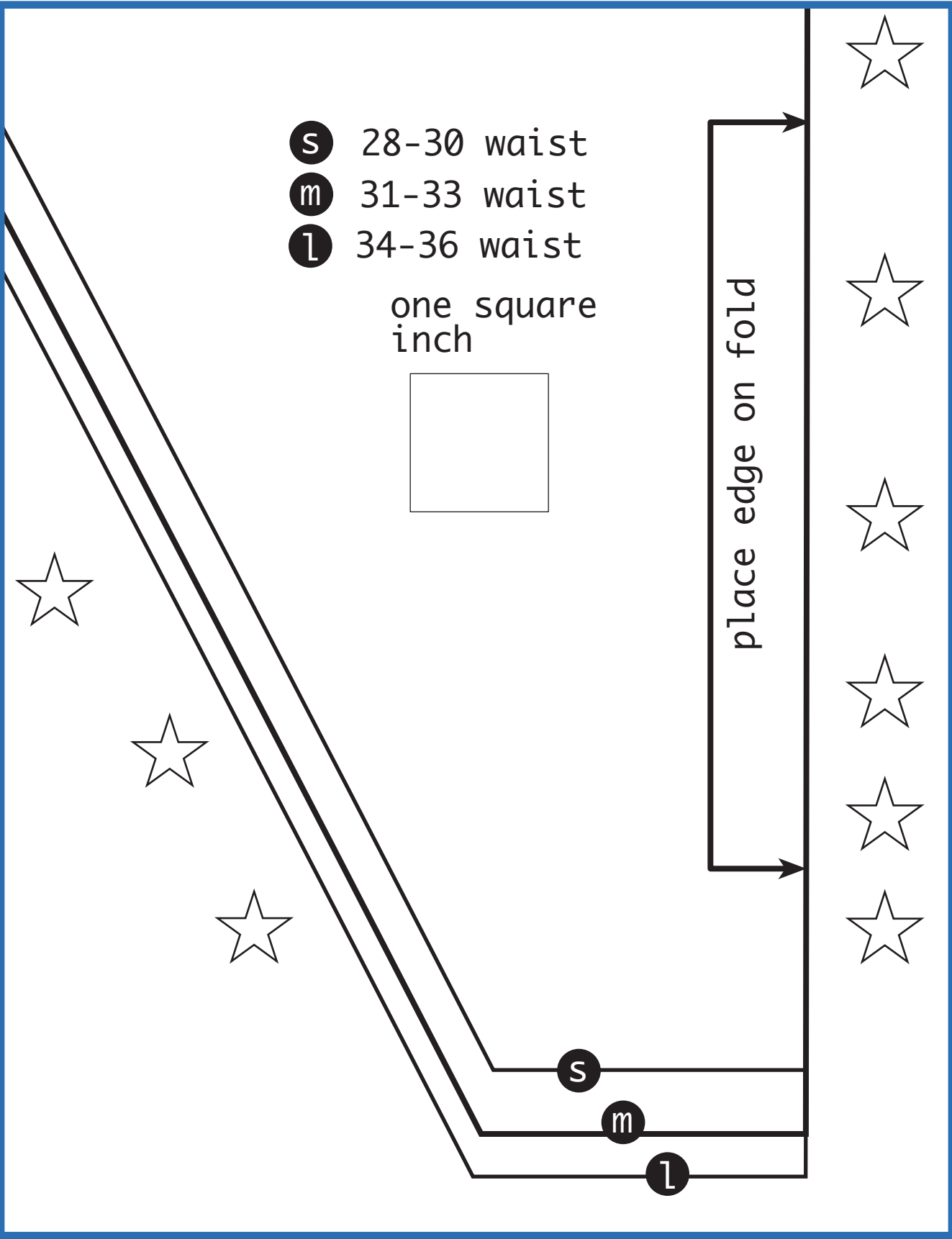


- S** 28-30 waist
- M** 31-33 waist
- L** 34-36 waist

one square
inch



place edge on fold





Men's Smooth Front Bikini

(back)

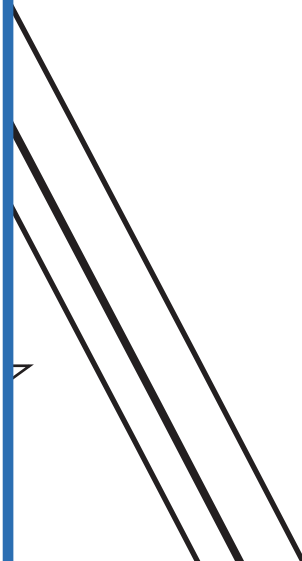
cut 1 from fabric on fold

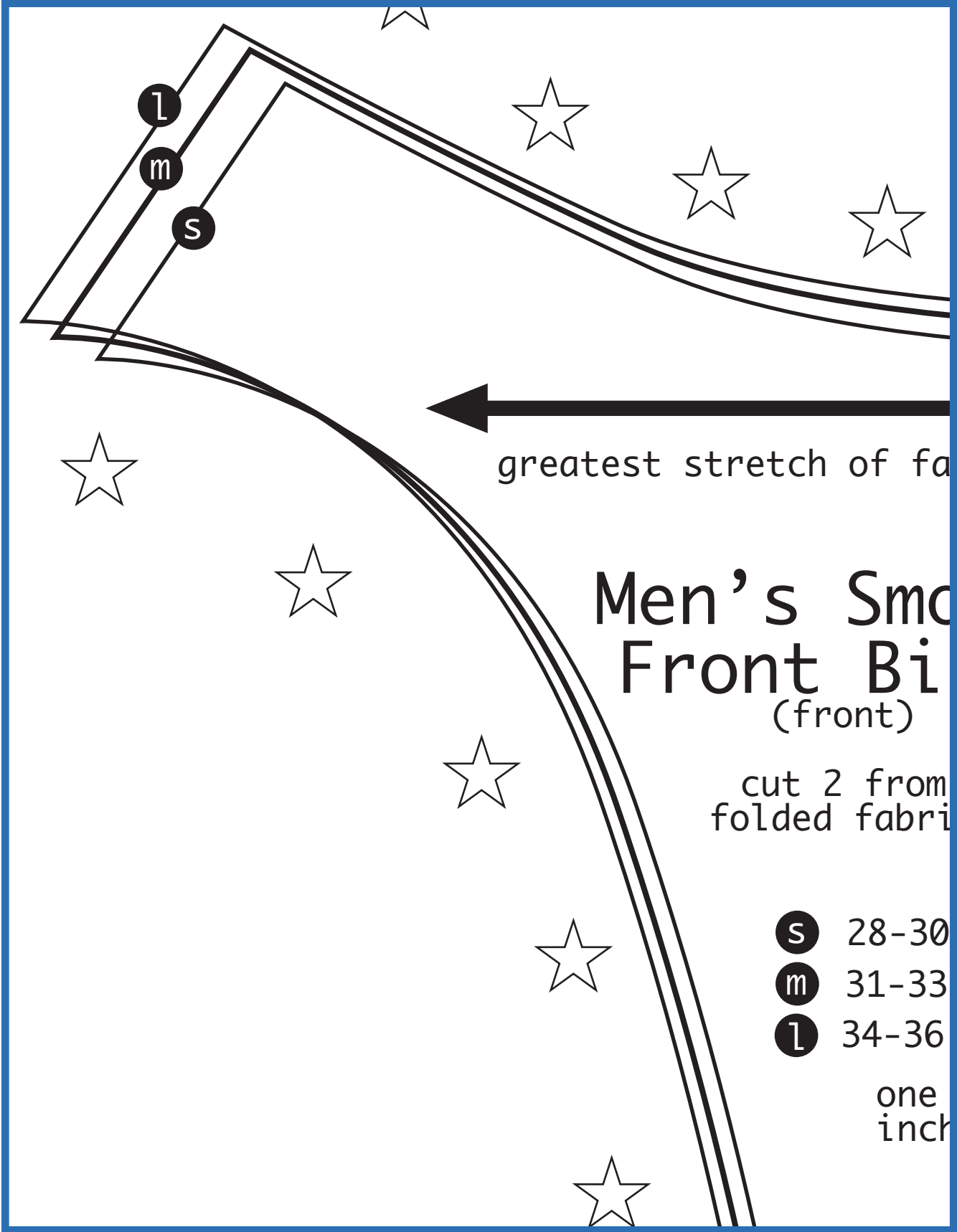
← greatest stretch of fabric →



- S** 28-30 waist
- M** 31-33 waist
- L** 34-36 waist

one square inch





greatest stretch of fabric

Men's Smock Front Bib (front)

cut 2 from
folded fabric

- S** 28-30
- m** 31-33
- l** 34-36

one
inch

Men's Smooth Front Bikini (front)

cut 2 from
folded fabric

- S** 28-30 waist
- M** 31-33 waist
- L** 34-36 waist

one square
inch



S

M

L



greatest stretch of fabric

Men's Smooth Front Bikini (front)

cut 2 from
folded fabric

- S** 28-30 waist
- M** 31-33 waist
- L** 34-36 waist

one square
inch

